

# ALPINE VT5000

Variable Temperature Glass Front Merchandiser



A Wittern Group Company

## ONE MACHINE... MANY POSSIBILITIES

Vend snacks, sodas, juices, milk, yogurts, and other foods best served cold from one versatile machine.

- **Highest energy efficiency** in the industry using only 5.7 Kwh/day



Energy  
Performance  
Rendement  
Énergétique

California  
Energy  
Commission  
Approved

- **New LED lighting option** enhances product presentation, requires no service for a minimum of **5+ years** and reduces lighting energy costs by **40%** over fluorescent equipped models
- **NAMA health safety on lower trays**
- **New rigid delivery box** accommodates taller product and includes removable box bottom for easy cleaning



*U-Select-It*  
*The choice for...*

**Quality equipment built to last.**

**Innovative features to help you sell more effectively**

**Versatile designs and products that allow you to grow at your pace**



**Full Line Vending Products & Services**

**Dispense a wide variety of foods & beverages.**



**Adjustable Snack & Candy Selections**

Configurable to almost any package size in the field with no need for tools  
 Full selection (5-3/4"W)  
 3/4 selection (4-5/16"W)  
 Candy selection (2-7/8"W)



**LED Lighting Option**

Enhances product presentation promoting more sales. No bulb servicing for 5 years. Energy efficient and eco friendly.



**Versatile Steel Beverage Trays Standard**

Hold up to 60 canned or bottle beverages



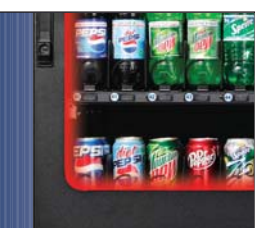
**iVend Guaranteed Delivery System**

Keeps customers satisfied and reduces service calls for misloaded product.



**Optional High Capacity Can Tray**

Add 150 can capacity to a single tray with this patented 6 selection option.



**Optional Heated Glass**

Optimum for use in high humidity locations.



**Door-In-Cabinet Design**

Adds security and rigidity to an already solid package.

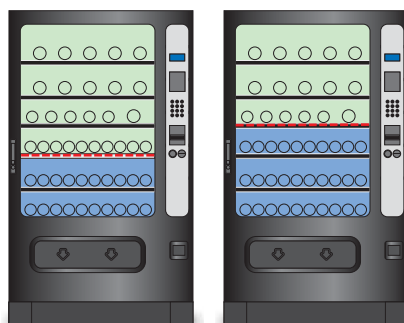
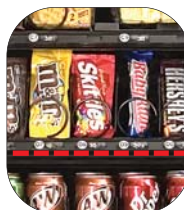


**Simple yet full featured interfaces**

- Programmable LED display
- Standard peripheral opening for additional payment or POS systems
- Back lighted keypad with Braille identification
- MDB support for all industry standard devices including cash, coin, debit and credit systems
- DEX data output support
- Full featured controller with sales and accounting:
  - Price setting by selection, row or machine
  - Free vend and Combo vend modes
  - Flexible space to selection setting
  - Time of day discounting
  - Time of day shutdown modes for energy savings and secured vend times
  - Programmable point of sale messages
  - Programmable coupon and token values
  - Coin and bill rejection rate counts
  - Accountability display by selection, row or machine
  - Talker device support for sight impaired

**Configure to meet your merchandising needs.**

Movable barrier tray allows you to adjust temperature zones.



**Performance**

**Proven Operating Environment**

- High: 100°F (38°C) @ 90% RH

**Average Temperature Differential Range of 20° between upper compartment and Health Controlled lower compartment at 80° F (26°C) ambient.**

- Super 1/3 Hp compressor uses only 5.7 Kwh/day @ 75°F (24°C), 45% RH

**Features**

**VT5000**

*NOTE: Selections capacities and weights vary depending on model configuration.*

Selections	Up to 60 Items
Standard Capacity	Varies with configuration
Pricing	Individual from \$0 to \$655.35
Payment Systems	All Industry standard MDB compatible devices
Communication	DEX/UCS
Standard Features	iVend® Delivery Sensors Triple Pane Argon Filled Glass with Low-E Coating
Optional Features	Custom helix and tray configurations, card readers, Heated Door Glass, 1/2 HP Compressor for extreme operation

**Specifications**

Height	72" (183 cm)
Width	41" (104 cm)
Depth	38" (97 cm)
Shipping Weight	975 lbs. (442 kg)
Electrical Services	115 VAC/60Hz, 9.5 Amps (230 VAC/50Hz, 4.8 Amps)
With Heated Glass	115 VAC/60Hz, 10.5 Amps (230 VAC/50Hz, 4.8 Amps)
Refrigeration	Super 1/3 HP, R134a Closed System

*In order to bring you the best products possible we continue to improve product design and performance and as such specifications are subject to change without notice.*



California Energy Commission Approved

© 2010 U-Select-It



U-Select-It  
 8040 University Boulevard  
 Des Moines, Iowa 50325  
 1-800-247-8709 • Fax: 515-274-0390  
 www.uselectit.com